

AREA CALCULATIONS

GROUND FLOOR:	
GROSS RETAIL LEASE AREA:	9,018 SF
(INCLUDING SELF STORAGE LEASING OFFICE)	
GROSS BUILDING AREA:	
GROUND FLOOR:	20,322 SF
SECOND FLOOR:	24,513 SF
THIRD FLOOR:	23,927 SF
FOURTH FLOOR:	23,927 SF
FIFTH FLOOR:	23,842 SF
SIXTH FLOOR (STAIR TOWERS):	548 SF
TOTAL:	117,079 SF

PRELIMINARY CODE ANALYSIS

APPLICABLE CODE:
FLORIDA BUILDING CODE 5TH EDITION

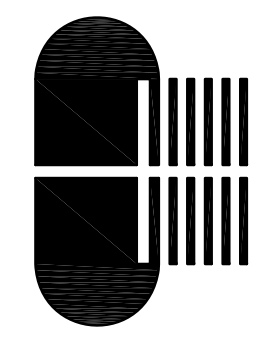
TYPE OF CONSTRUCTION:
II-A, NON-COMBUSTIBLE,
1 HOUR PROTECTED,
FULLY SPRINKLERED

OCCUPANCY:
S-1, FBC MODERATE HAZARD,
NFPA ORDINARY HAZARD
FBC 504.2 4 STORIES + 1 = 5 STORIES

PROPOSED SUSTAINABLE DEVELOPMENT OPTIONS

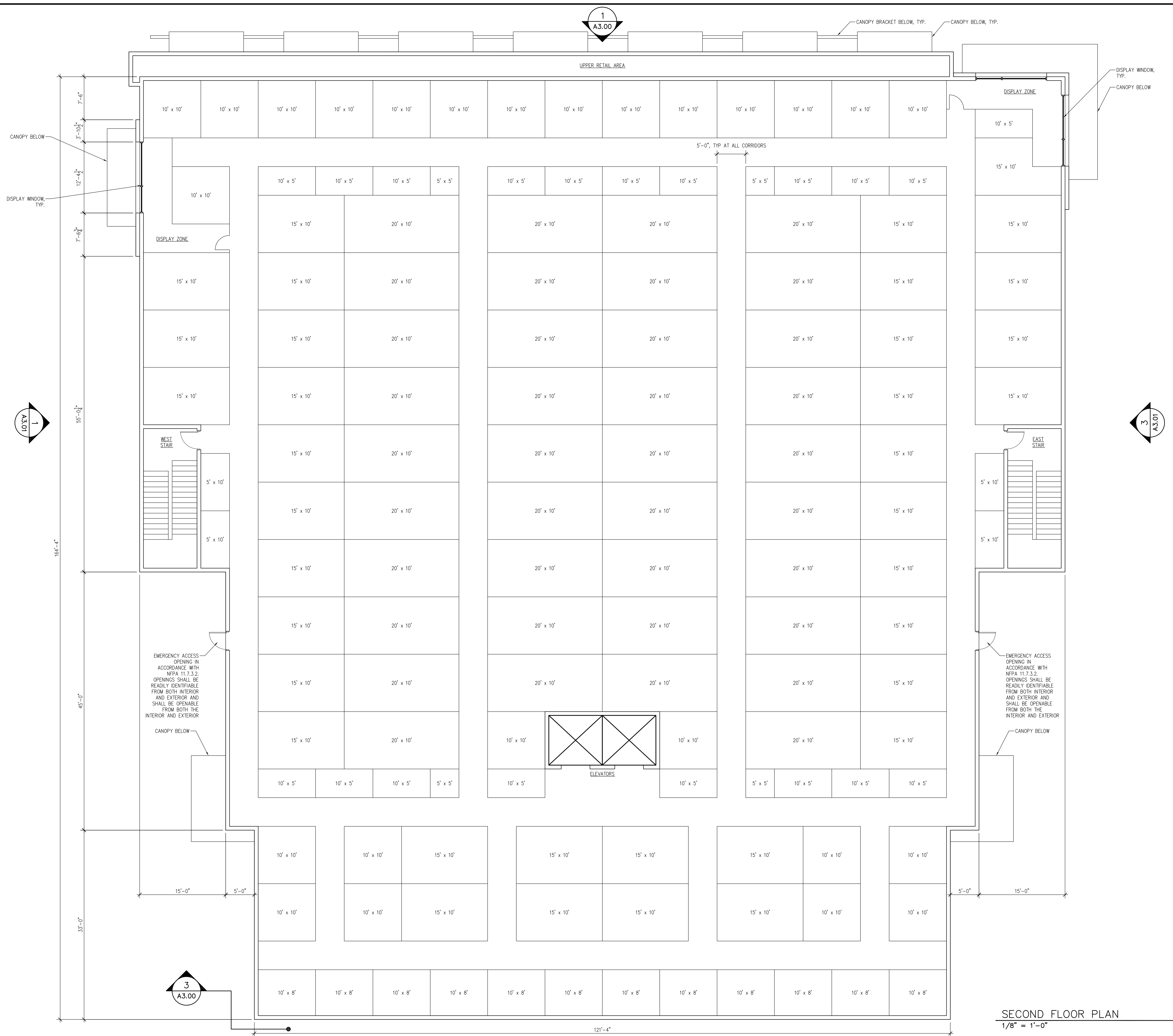
INFILL DEVELOPMENT	4 POINTS
EFFICIENT COOLING	2 POINTS
EFFICIENT WATER HEATING	2 POINTS
SOUTH OVERHANGS	2 POINTS
WHITE ROOF	2 POINTS
TOTAL:	12 POINTS

GROUND FLOOR PLAN
1/8" = 1'-0"



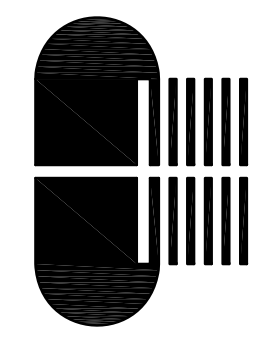
**MCNAB ROAD
SELF STORAGE + RETAIL**
POMPANO BEACH, FLORIDA 33062

DATE:
08.11.2016
JOB NO.:
2016.042
SHEET:
GROUND FLOOR PLAN



SECOND FLOOR PLAN
1/8" = 1'-0"

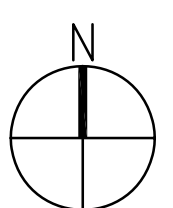
PATRICK M. PILLOT
ARCHITECT
1267 SECOND STREET SARASOTA, FLORIDA 34236
(941) 955-7375 FAX: (941) 953-2281
FLORIDA #AR0011554 EMAIL: PAT@PILLOTARCH.COM



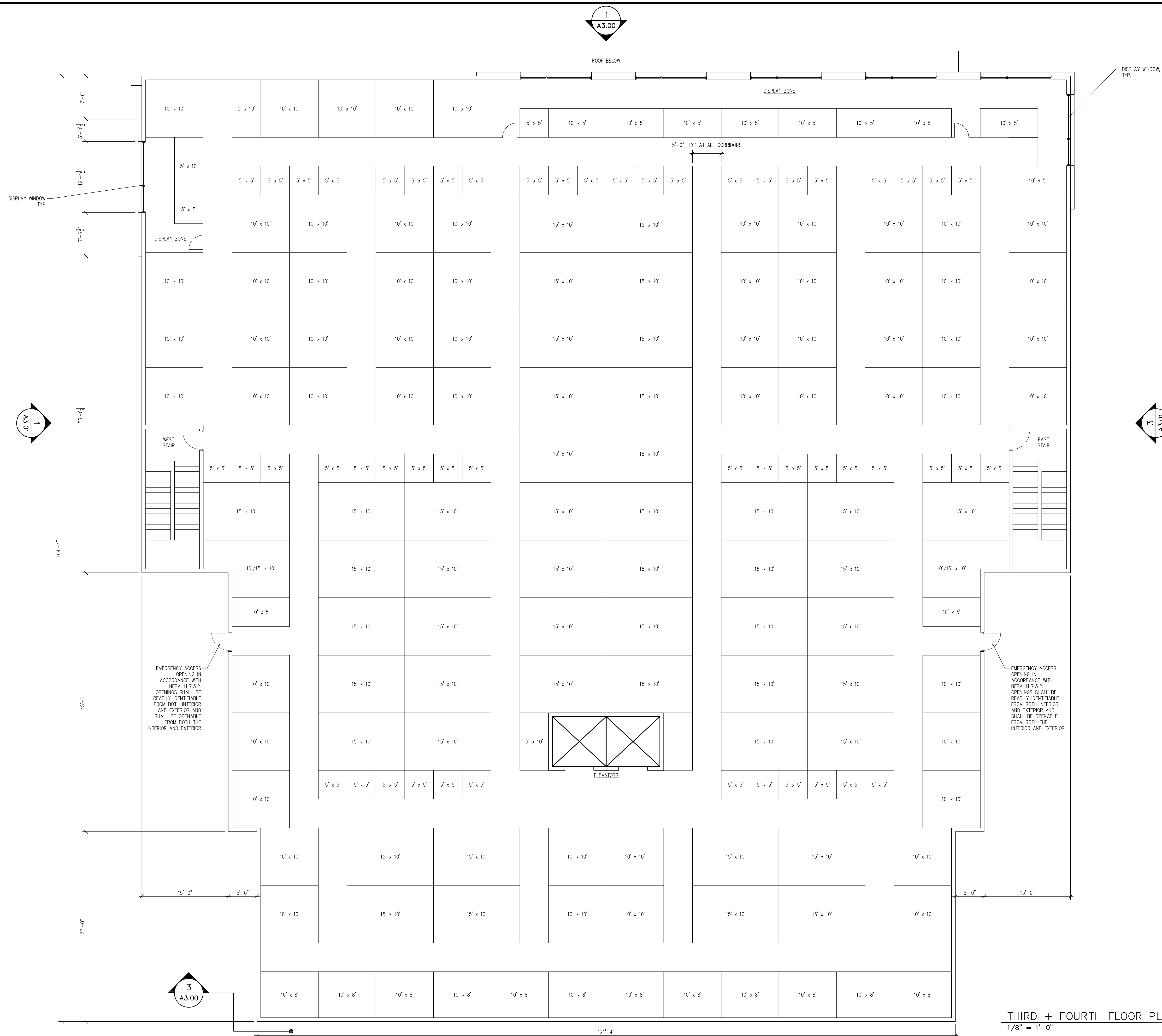
MCNAB ROAD
SELF STORAGE + RETAIL
POMPANO BEACH, FLORIDA 33062

DATE:
08.11.2016
JOB NO.:
2016.042
SHEET:
SECOND FLOOR
PLAN

A2.02 -



1

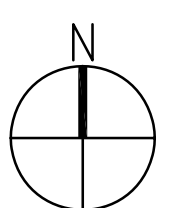


1
A3.00

1
A3.01

3
A3.01

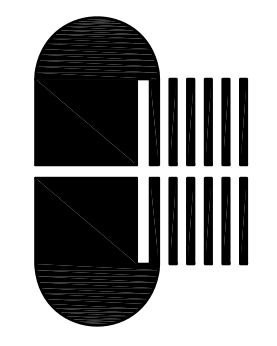
3
A3.00



THIRD + FOURTH FLOOR PLAN
1/8" = 1'-0"

1

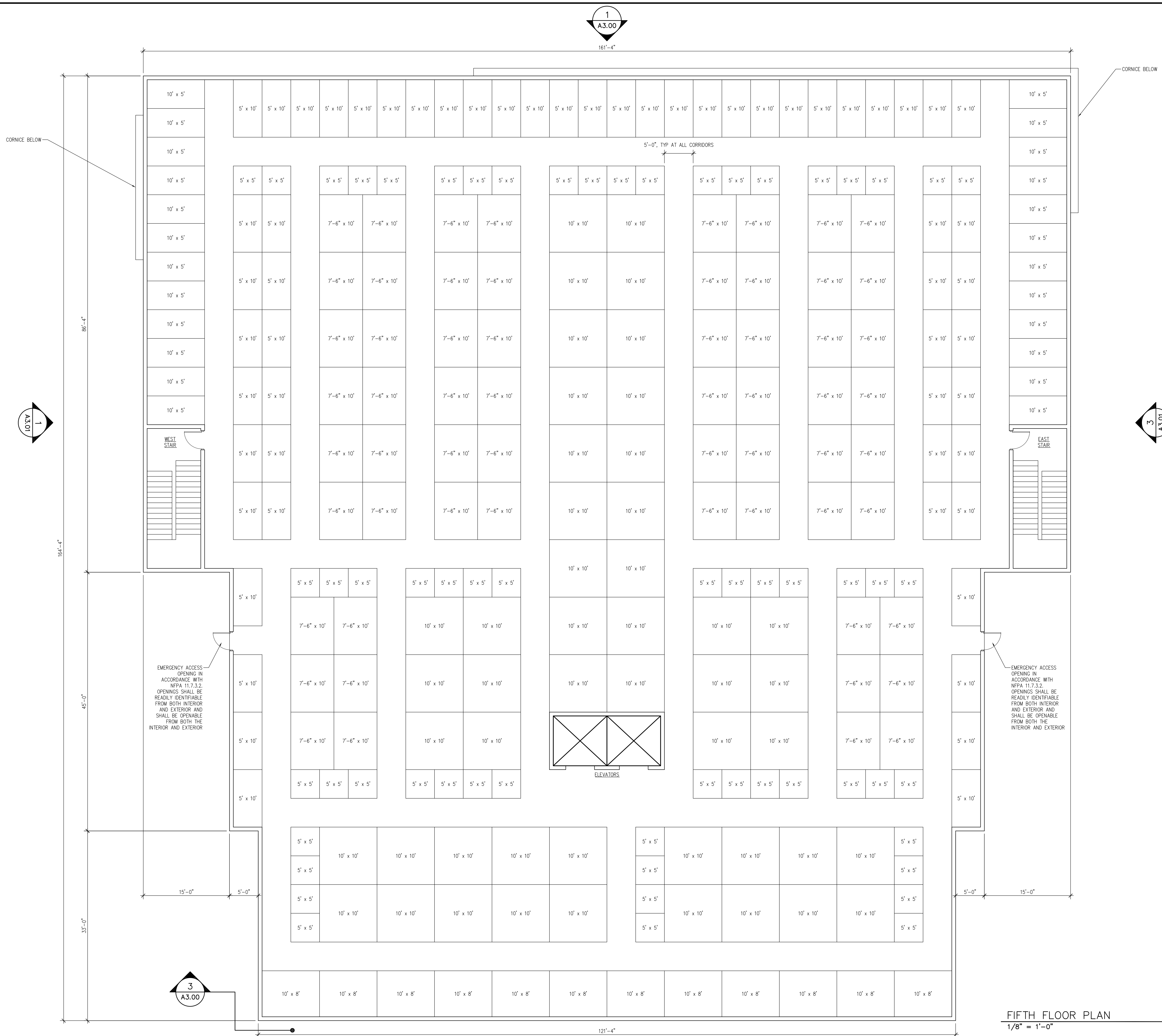
PATRICK M. PILLOT
ARCHITECT
1267 SECOND STREET
SARASOTA, FLORIDA 34236
(941) 955-7375
FLORIDA #AR0011554
FAX: (941) 953-2281
EMAIL: PAT@PILLOTARCH.COM



McNAB ROAD
SELF STORAGE + RETAIL
POMPANO BEACH, FLORIDA 33062

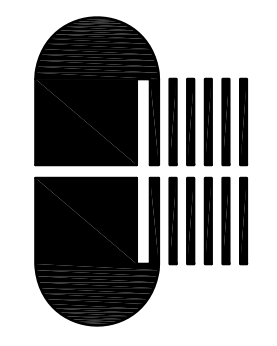
DATE:
08.11.2016
JOB NO.:
2016.042
SHEET:
THIRD + FOURTH
FLOOR PLAN

A2.03 -



FIFTH FLOOR PLAN
1/8" = 1'-0"

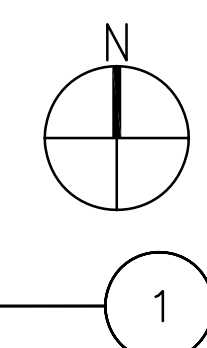
PATRICK M. PILLOT
ARCHITECT
1267 SECOND STREET
SARASOTA, FLORIDA 34236
(941) 955-7375 FAX: (941) 953-2281
FLORIDA #AFC0011554 EMAIL: PAT@PILLOTARCH.COM

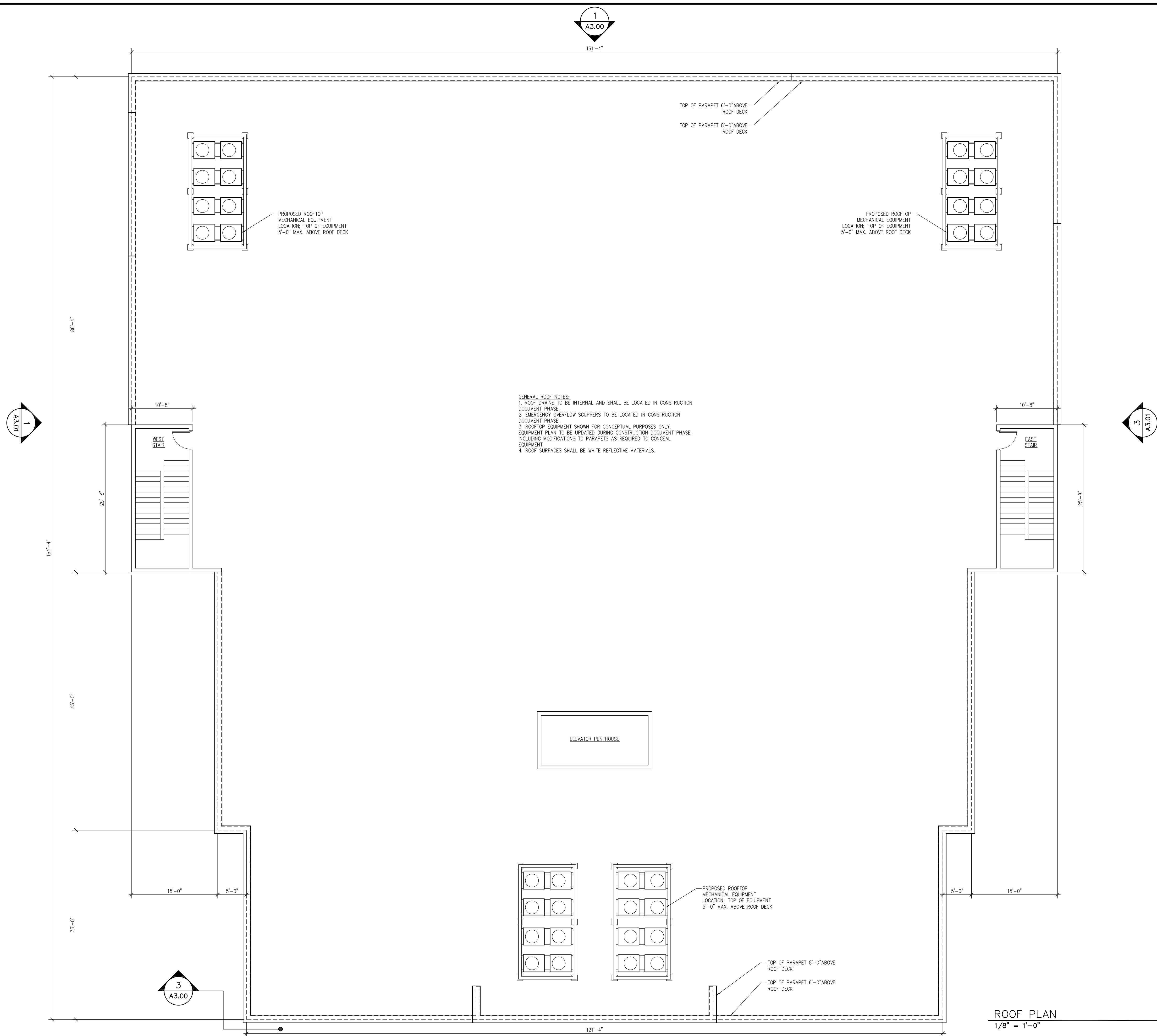


McNAB ROAD
SELF STORAGE + RETAIL
POMPANO BEACH, FLORIDA 33062

DATE:
08.11.2016
JOB NO.:
2016.042
SHEET:
FIFTH FLOOR
PLAN

A2.04 -

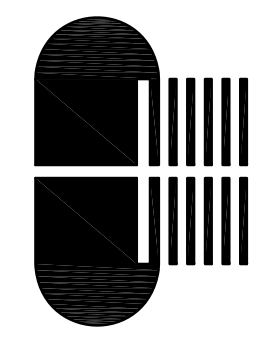




GENERAL ROOF NOTES:
 1. ROOF DRAINS TO BE INTERNAL AND SHALL BE LOCATED IN CONSTRUCTION DOCUMENT PHASE.
 2. EMERGENCY OVERFLOW SCUPPERS TO BE LOCATED IN CONSTRUCTION DOCUMENT PHASE.
 3. ROOFTOP EQUIPMENT SHOWN FOR CONCEPTUAL PURPOSES ONLY. EQUIPMENT PLAN TO BE UPDATED DURING CONSTRUCTION DOCUMENT PHASE, INCLUDING MODIFICATIONS TO PARAPETS AS REQUIRED TO CONCEAL EQUIPMENT.
 4. ROOF SURFACES SHALL BE WHITE REFLECTIVE MATERIALS.

ROOF PLAN
 1/8" = 1'-0"

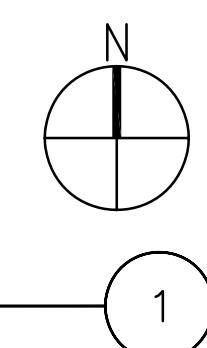
PATRICK M. PILLOT
 ARCHITECT
 1267 SECOND STREET SARASOTA, FLORIDA 34236
 (941) 955-7375 FAX: (941) 953-2281
 FLORIDA #AFR0011554 EMAIL: PAT@PILLOTARCH.COM



MCNAB ROAD
SELF STORAGE + RETAIL
 POMPANO BEACH, FLORIDA 33062

DATE: 08.11.2016
 JOB NO.: 2016.042
 SHEET: ROOF PLAN

A2.05 -



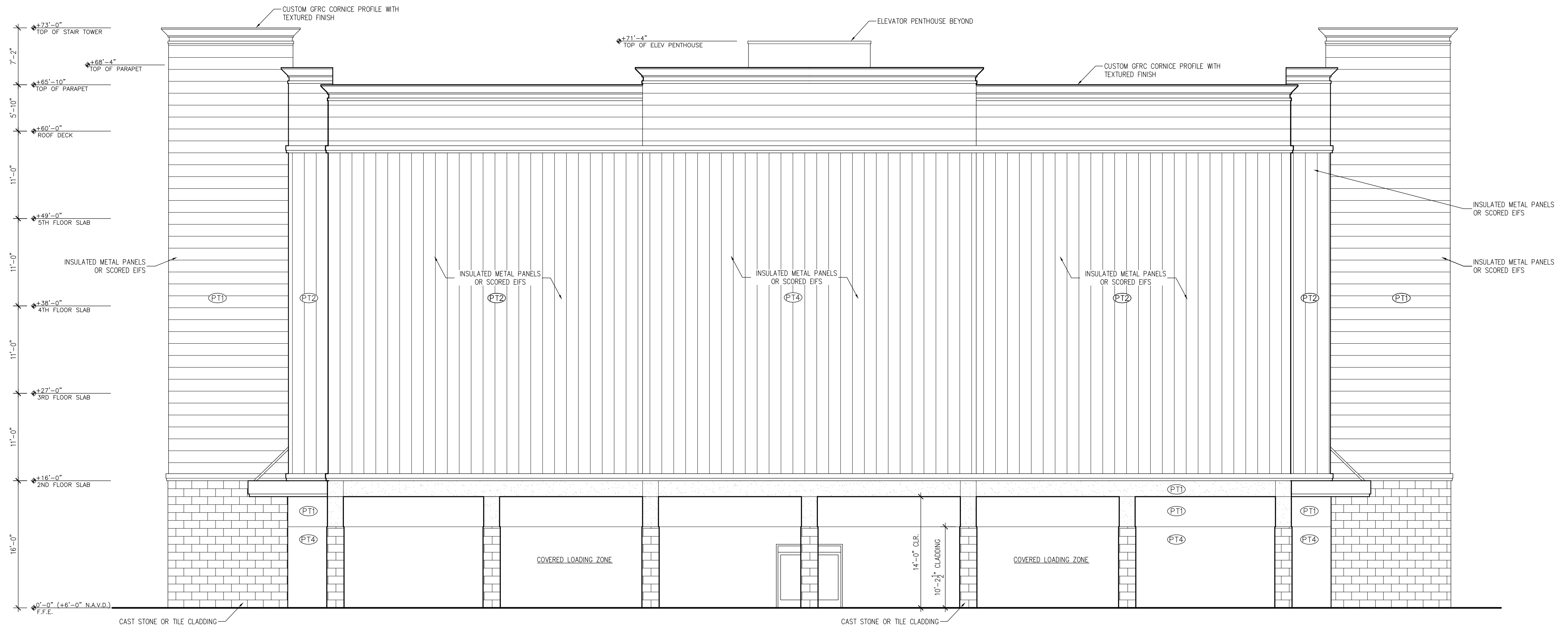
1
 A3.00
 161'-4"

1
 A3.01

3
 A3.01

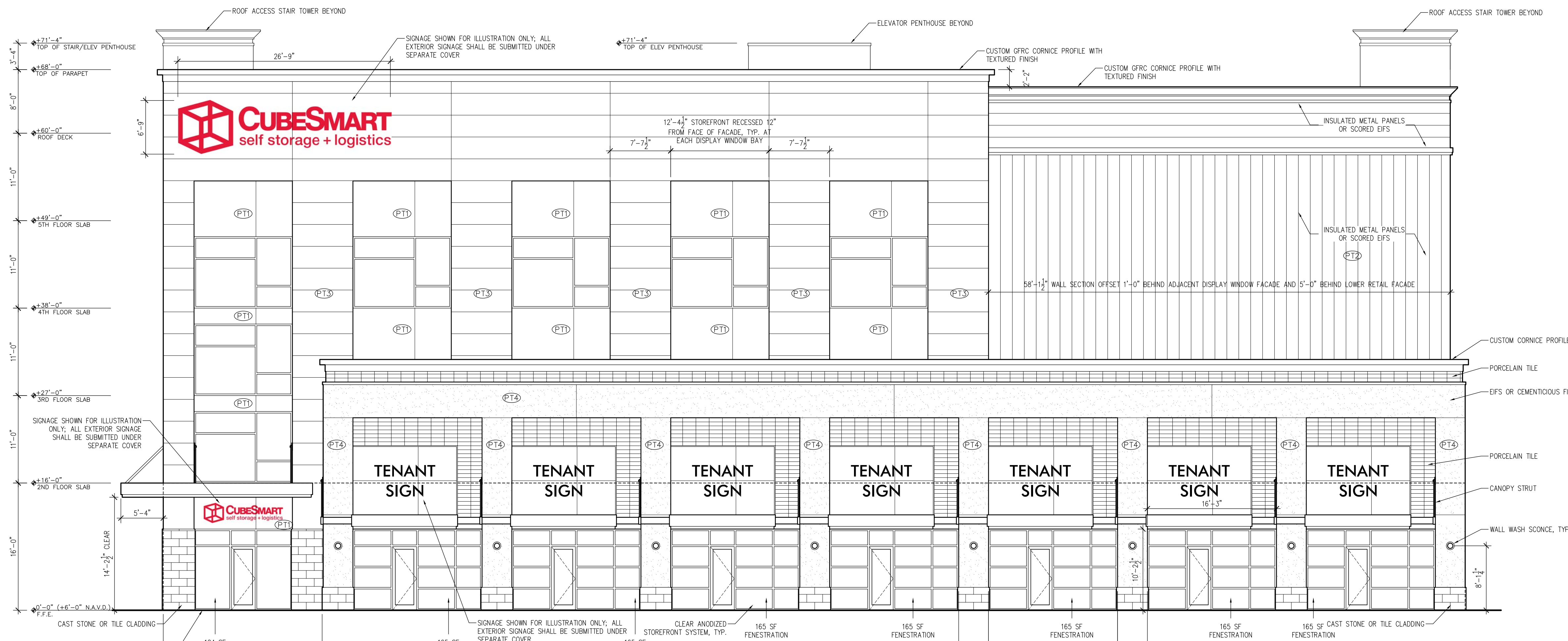
3
 A3.00

1



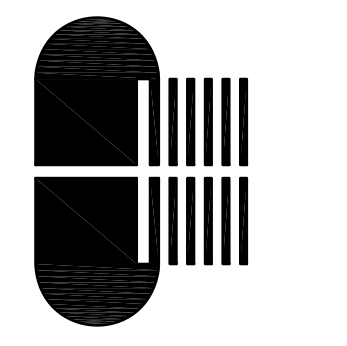
SOUTH ELEVATION
1/8" = 1'-0"

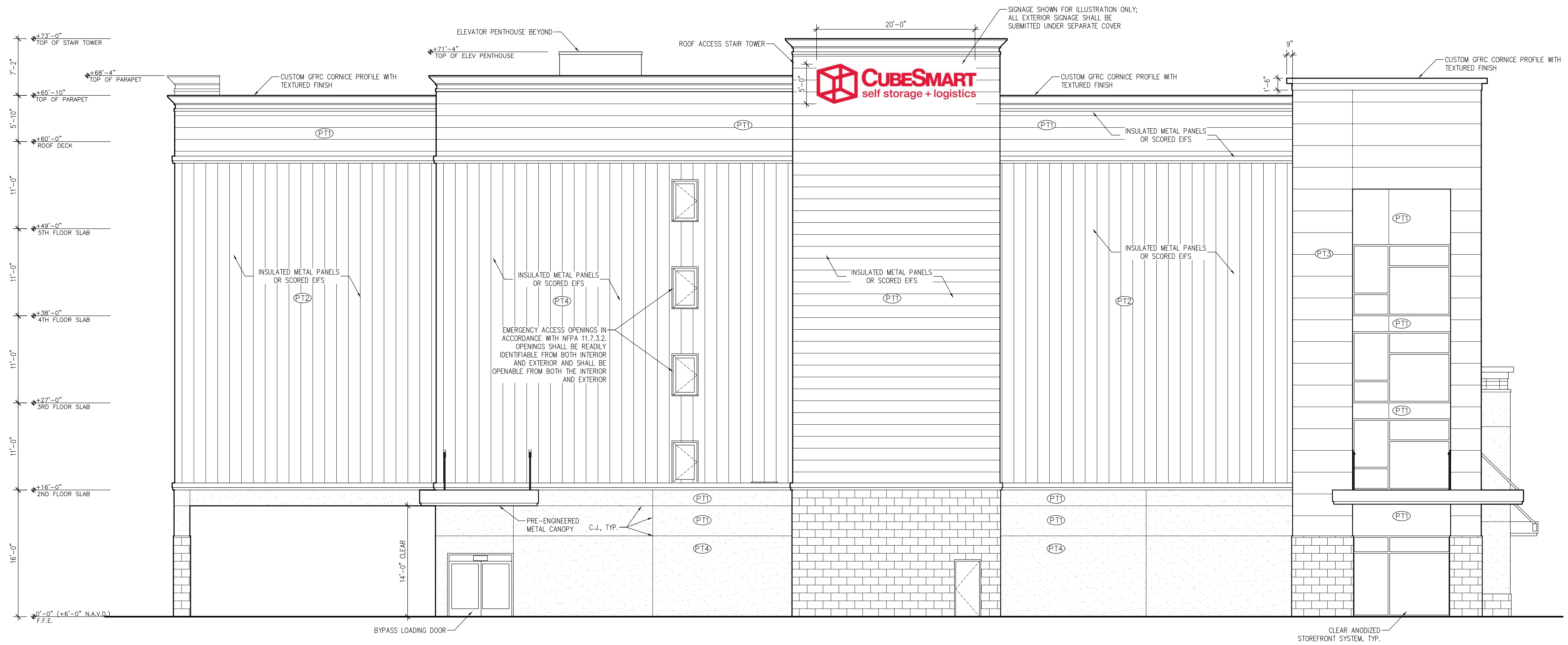
3



NORTH ELEVATION
1/8" = 1'-0"

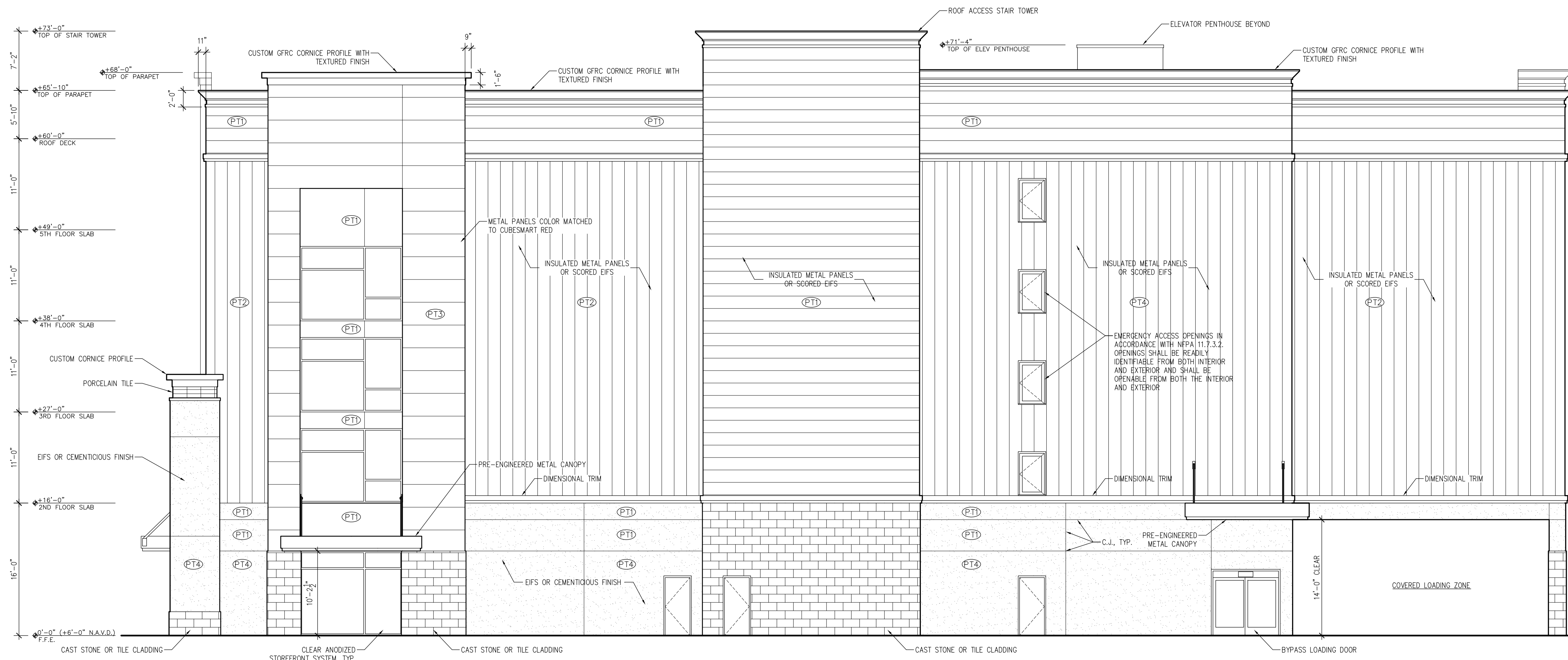
1





WEST ELEVATION
1/8" = 1'-0"

3



EAST ELEVATION
1/8" = 1'-0"

1

